



MONTHLY MEMBERSHIP PROGRESS REPORT

District 18 L

Results as of: 5/31/2016

GMT: HARVEY WHITLEY

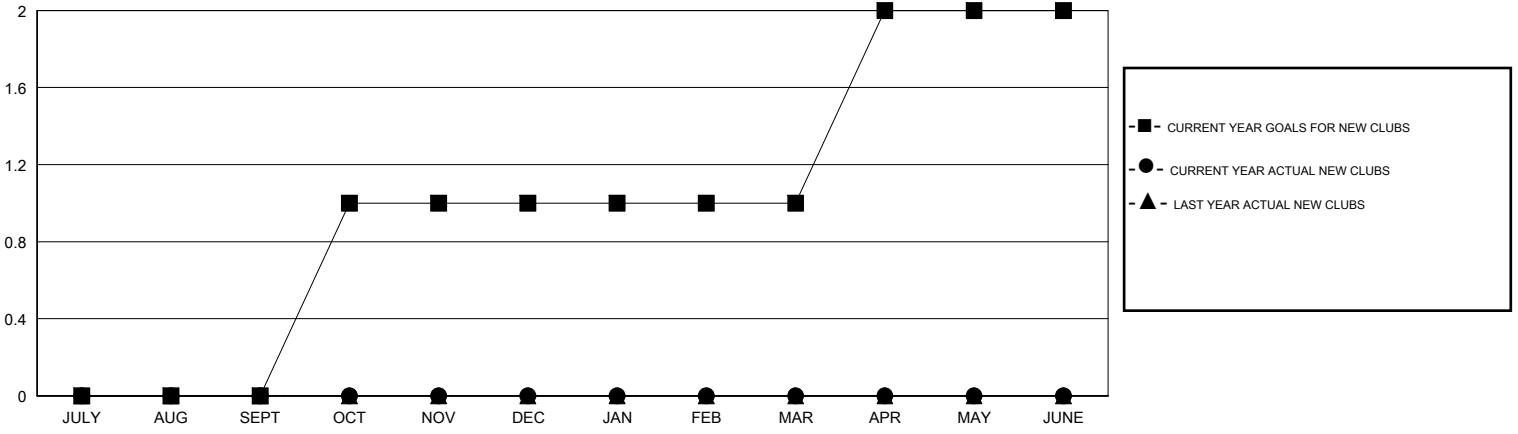
LOCATION GEORGIA

GMT CA 1

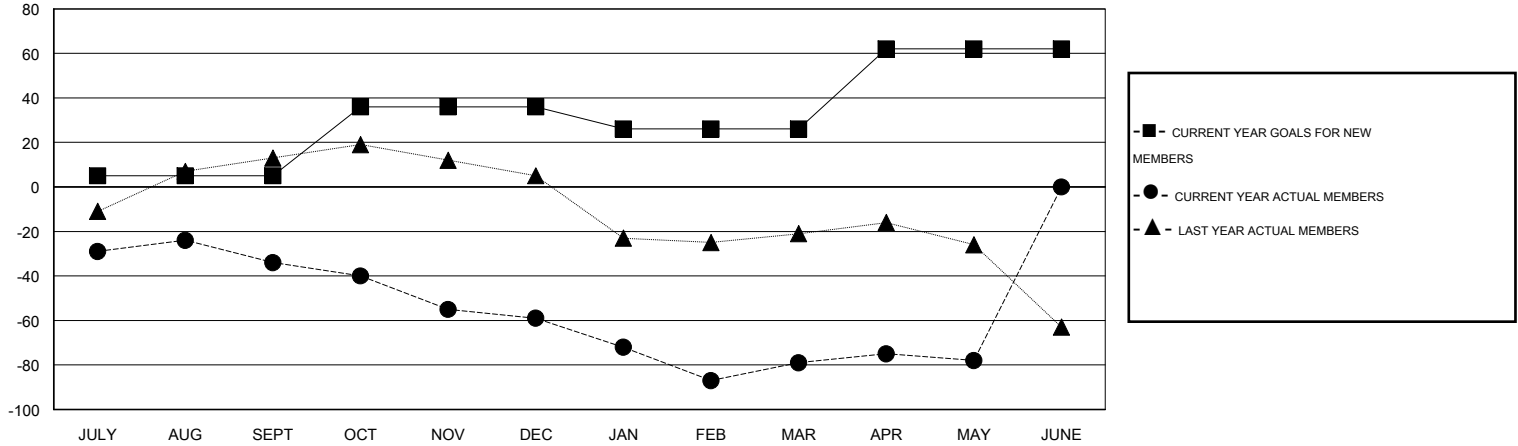
Clubs				
RESULTS FOR 2015-2016				
QUARTER	NEW CLUB GOAL	NEW CLUBS	DROPPED CLUBS	NET GAIN/LOSS
JULY/AUG/SEPT	0	0	0	0
OCT/NOV/DEC	1	0	2	-2
JAN/FEB/MAR	0	0	0	0
APR/MAY/JUNE	1	0	0	0

Members				
RESULTS FOR 2015-2016				
QUARTER	NEW MEMBER GOAL	CHARTER AND NEW MEMBERS ADDED	DROPPED MEMBERS	NET GAIN/LOSS
JULY/AUG/SEPT	5	36	70	-34
OCT/NOV/DEC	31	20	45	-25
JAN/FEB/MAR	-10	27	47	-20
APR/MAY/JUNE	36	27	26	1

GOALS AND ACTUAL NEW CLUBS CUMULATIVE



GOALS AND ACTUAL MEMBERS CUMULATIVE



DROPPED CLUBS: 2

31 CLUBS OF 51 ADDED 1 OR MORE NEW MEMBERS

GENDER DISTRIBUTION	
MALE	908 (65.09%)
FEMALE	487 (34.91%)

DROPPED MEMBERS	
DECEASED	21
CLUB CANCELLED	3
OTHER	164
TOTAL	188

[CLICK HERE FOR HEALTH ASSESSMENT DATA](#)

FAMILY UNIT MEMBERS	246
HEAD OF HOUSEHOLD	119
NON-HEAD OF HOUSEHOLD	127